



KMcube
ASSET MANAGEMENT

COMPANY PRESENTATION

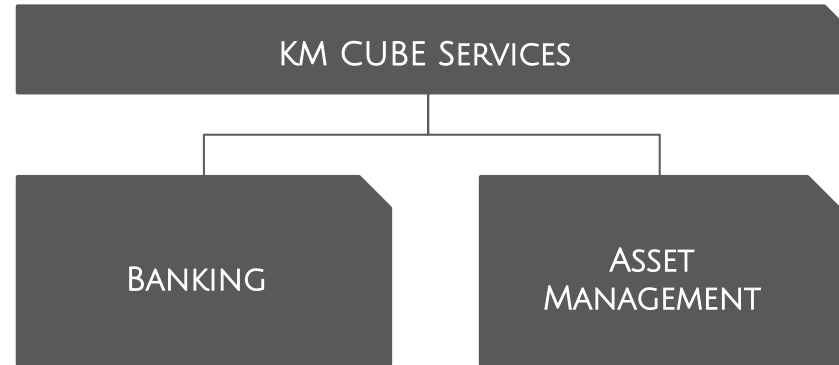
OCT 2022

ABOUT KM CUBE

WHO WE ARE

We are an external asset management firm with focus purely on advising investors to manage their wealth

Our firm is the result of a team effort, a synthesis of talents with a strong combination of private banking and asset management skills



FACT CHECKS

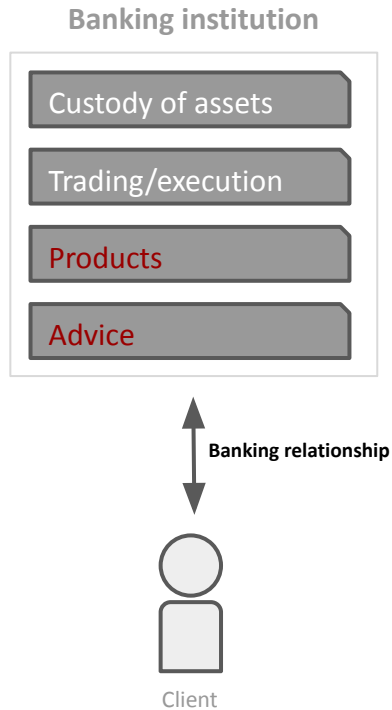
Established 2017 | Global Focus
Custodians in Switzerland, Luxembourg, Ireland, Greece

Licence: 4/795/24.8.2017

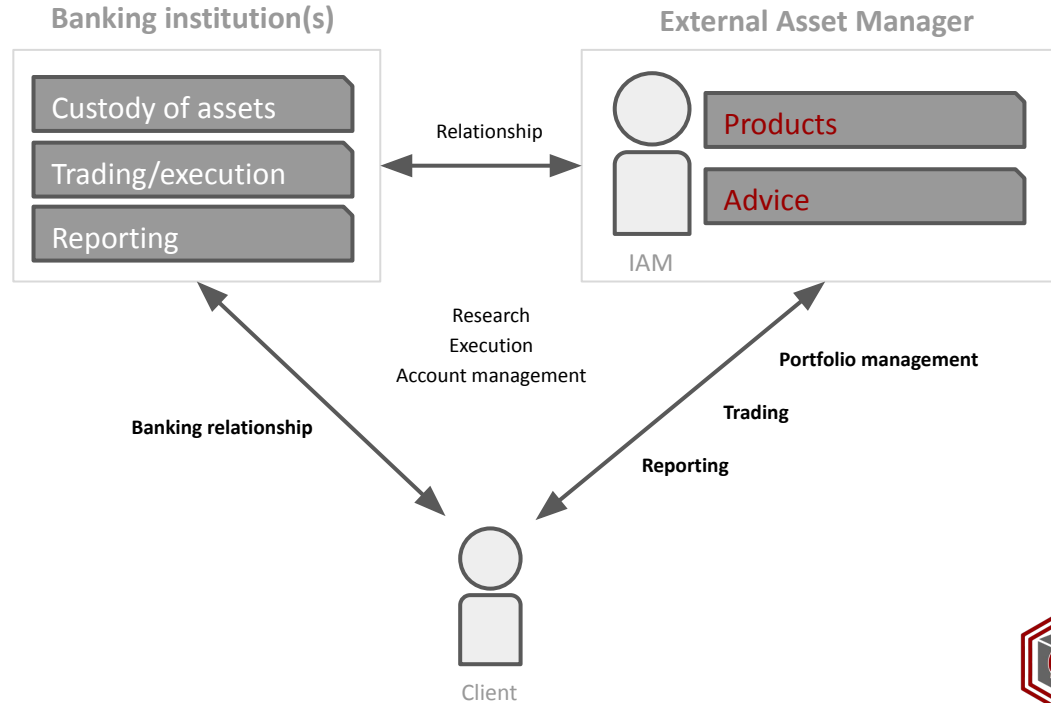


EXTERNAL ASSET MANAGER: HOW IT WORKS

BEFORE



AFTER



WHAT WE OFFER, HOW WE DIFFERENTIATE

DISCRETIONARY SERVICES

➤ **Systematic (Unicorn):**

eliminates the behavioural bias, reduces cost and increases the probability of profit over the long term

➤ **Absolute return (Navigator):**

Global allocation considering investment views and economic fundamentals

ADVISORY SERVICES:

- Investment advice on all asset classes
- Portfolio analysis
- Portfolio optimization based on proven models in economic theory
- Trade idea generation (on a tactical basis)
- Auxiliary services





KMcube
ASSET MANAGEMENT

Telephone: +30 216 800 1226
3 Gkyzi Str., Maroussi, 15125
Athens, Greece

www.km3am.com
info@km3.gr

